

REFERENCE DRAWING:-
1 CONCEPTUAL GIS BUILDING LAYOUT - TB-1-400-316-005
2 GIS LAYOUT - IHWG900056-2-REV 03

CATEGORY	DESCRIPTION
CAT-1	Drawing/documents approved for final distribution. BHEL will proceed with manufacturing/fabrication/construction.
CAT-2	Drawing/documents cleared for manufacturing/fabrication/construction subject to incorporating the comments given. Approval in Category - 1 Comments will be marked on the drawing documents.
CAT-3	Drawing document will be corrected as per comment and resubmitted by BHEL for further review/checking.
CAT-4	Drawing document of this category are for information only and not for approval. Information furnished on the document is noted.

Approval conveyed herein neither relieves the Vendor/Contractor of his contractual obligations and his responsibilities for correctness of dimensions, materials of construction, weights, quantities, design details, assembly fits, performance requirements and conformity of supplies with the Indian Statutory Laws as may be applicable, nor does it limit the purchaser's rights under the contract.

Reviewed by :Date :

GROUND FLOOR PLAN

TANGEDCO comments :- Add 2 numbers ventilator (4 Nos+2 Nos) in all bays to increase lighting

LEGEND :-	
FG.	FINISHED GROUND LEVEL
FFL	FINISHED FLOOR LEVEL
TOC	TOP OF CONCRETE
FC	FALSE CEILING
UDI	UNDER DECK INSULATION
RS	ROLLING SHUTTER
D	DOOR
W	WINDOW
V	VENTILATOR
EF	EXHAUST FAN
WB	WASH BASIN

PROJECT	2X660 MW UDANGUDI SUPERCritical TPS, STAGE-1
CUSTOMER	TAMILNADU GENERATION AND DISTRIBUTION CORPORATION LIMITED (TANGEDCO)
CONSULTANT	TATA CONSULTING ENGINEERS LIMITED BENGALURU
CLIENT	BARHAT HEAVY ELECTRICALS LTD TRANSMISSION BUSINESS GROUP NOIDA

TITLE		ARCHTTECTURAL DRAWING GIS BUILDING (PLAN)	
DATE	18/04/20	SCALE	1:75
REV	01	DATE	18/04/20
REV	02	DATE	18/04/20
REV	03	DATE	18/04/20
REV	04	DATE	18/04/20
REV	05	DATE	18/04/20
REV	06	DATE	18/04/20
REV	07	DATE	18/04/20
REV	08	DATE	18/04/20
REV	09	DATE	18/04/20
REV	10	DATE	18/04/20
REV	11	DATE	18/04/20
REV	12	DATE	18/04/20
REV	13	DATE	18/04/20
REV	14	DATE	18/04/20
REV	15	DATE	18/04/20
REV	16	DATE	18/04/20
REV	17	DATE	18/04/20
REV	18	DATE	18/04/20
REV	19	DATE	18/04/20
REV	20	DATE	18/04/20
REV	21	DATE	18/04/20
REV	22	DATE	18/04/20
REV	23	DATE	18/04/20
REV	24	DATE	18/04/20
REV	25	DATE	18/04/20
REV	26	DATE	18/04/20
REV	27	DATE	18/04/20
REV	28	DATE	18/04/20
REV	29	DATE	18/04/20
REV	30	DATE	18/04/20
REV	31	DATE	18/04/20
REV	32	DATE	18/04/20
REV	33	DATE	18/04/20
REV	34	DATE	18/04/20
REV	35	DATE	18/04/20
REV	36	DATE	18/04/20
REV	37	DATE	18/04/20
REV	38	DATE	18/04/20
REV	39	DATE	18/04/20
REV	40	DATE	18/04/20
REV	41	DATE	18/04/20
REV	42	DATE	18/04/20
REV	43	DATE	18/04/20
REV	44	DATE	18/04/20
REV	45	DATE	18/04/20
REV	46	DATE	18/04/20
REV	47	DATE	18/04/20
REV	48	DATE	18/04/20
REV	49	DATE	18/04/20
REV	50	DATE	18/04/20
REV	51	DATE	18/04/20
REV	52	DATE	18/04/20
REV	53	DATE	18/04/20
REV	54	DATE	18/04/20
REV	55	DATE	18/04/20
REV	56	DATE	18/04/20
REV	57	DATE	18/04/20
REV	58	DATE	18/04/20
REV	59	DATE	18/04/20
REV	60	DATE	18/04/20
REV	61	DATE	18/04/20
REV	62	DATE	18/04/20
REV	63	DATE	18/04/20
REV	64	DATE	18/04/20
REV	65	DATE	18/04/20
REV	66	DATE	18/04/20
REV	67	DATE	18/04/20
REV	68	DATE	18/04/20
REV	69	DATE	18/04/20
REV	70	DATE	18/04/20
REV	71	DATE	18/04/20
REV	72	DATE	18/04/20
REV	73	DATE	18/04/20
REV	74	DATE	18/04/20
REV	75	DATE	18/04/20
REV	76	DATE	18/04/20
REV	77	DATE	18/04/20
REV	78	DATE	18/04/20
REV	79	DATE	18/04/20
REV	80	DATE	18/04/20
REV	81	DATE	18/04/20
REV	82	DATE	18/04/20
REV	83	DATE	18/04/20
REV	84	DATE	18/04/20
REV	85	DATE	18/04/20
REV	86	DATE	18/04/20
REV	87	DATE	18/04/20
REV	88	DATE	18/04/20
REV	89	DATE	18/04/20
REV	90	DATE	18/04/20
REV	91	DATE	18/04/20
REV	92	DATE	18/04/20
REV	93	DATE	18/04/20
REV	94	DATE	18/04/20
REV	95	DATE	18/04/20
REV	96	DATE	18/04/20
REV	97	DATE	18/04/20
REV	98	DATE	18/04/20
REV	99	DATE	18/04/20
REV	100	DATE	18/04/20
REV	101	DATE	18/04/20
REV	102	DATE	18/04/20
REV	103	DATE	18/04/20
REV	104	DATE	18/04/20
REV	105	DATE	18/04/20
REV	106	DATE	18/04/20
REV	107	DATE	18/04/20
REV	108	DATE	18/04/20
REV	109	DATE	18/04/20
REV	110	DATE	18/04/20
REV	111	DATE	18/04/20
REV	112	DATE	18/04/20
REV	113	DATE	18/04/20
REV	114	DATE	18/04/20
REV	115	DATE	18/04/20
REV	116	DATE	18/04/20
REV	117	DATE	18/04/20
REV	118	DATE	18/04/20
REV	119	DATE	18/04/20
REV	120	DATE	18/04/20
REV	121	DATE	18/04/20
REV	122	DATE	18/04/20
REV	123	DATE	18/04/20
REV	124	DATE	18/04/20
REV	125	DATE	18/04/20
REV	126	DATE	18/04/20
REV	127	DATE	18/04/20
REV	128	DATE	18/04/20
REV	129	DATE	18/04/20
REV	130	DATE	18/04/20
REV	131	DATE	18/04/20
REV	132	DATE	18/04/20
REV	133	DATE	18/04/20
REV	134	DATE	18/04/20
REV	135	DATE	18/04/20
REV	136	DATE	18/04/20
REV	137	DATE	18/04/20
REV	138	DATE	18/04/20
REV	139	DATE	18/04/20
REV	140	DATE	18/04/20
REV	141	DATE	18/04/20
REV	142	DATE	18/04/20
REV	143	DATE	18/04/20
REV	144	DATE	18/04/20
REV	145	DATE	18/04/20
REV	146	DATE	18/04/20
REV	147	DATE	18/04/20
REV	148	DATE	18/04/20
REV	149	DATE	18/04/20
REV	150	DATE	18/04/20
REV	151	DATE	18/04/20
REV	152	DATE	18/04/20
REV	153	DATE	18/04/20
REV	154	DATE	18/04/20
REV	155	DATE	18/04/20
REV	156	DATE	18/04/20
REV	157	DATE	18/04/20
REV	158	DATE	18/04/20
REV	159	DATE	18/04/20
REV	160	DATE	18/04/20
REV	161	DATE	18/04/20
REV	162	DATE	18/04/20
REV	163	DATE	18/04/20
REV	164	DATE	18/04/20
REV	165	DATE	18/04/20
REV	166	DATE	18/04/20
REV	167	DATE	18/04/20
REV	168	DATE	18/04/20
REV	169	DATE	18/04/20
REV	170	DATE	18/04/20
REV	171	DATE	18/04/20
REV	172	DATE	18/04/20
REV	173	DATE	18/04/20
REV	174	DATE	18/04/20
REV	175	DATE	18/04/20
REV	176	DATE	18/04/20
REV	177	DATE	18/04/20
REV	178	DATE	18/04/20
REV	179	DATE	18/04/20
REV	180	DATE	18/04/20
REV	181	DATE	18/04/20
REV	182	DATE	18/04/20
REV	183	DATE	18/04/20
REV	184	DATE	18/04/20
REV	185	DATE	18/04/20
REV	186	DATE	18/04/20
REV	187	DATE	18/04/20
REV	188	DATE	18/04/20
REV	189	DATE	18/04/20
REV	190	DATE	18/04/20
REV	191	DATE	18/04/20
REV	192	DATE	18/04/20
REV	193	DATE	18/04/20
REV	194	DATE	18/04/20
REV	195	DATE	18/04/20
REV	196	DATE	18/04/20
REV	197	DATE	18/04/20
REV	198	DATE	18/04/20
REV	199	DATE	18/04/20
REV	200	DATE	18/04/20
REV	201	DATE	18/04/20
REV	202	DATE	18/04/20
REV	203	DATE	18/04/20
REV	204	DATE	18/04/20
REV	205	DATE	18/04/20
REV	206	DATE	18/04/20
REV	207	DATE	18/04/20
REV	208	DATE	18/04/20
REV	209	DATE	18/04/20
REV	210	DATE	18/04/20
REV	211	DATE	18/04/20
REV	212	DATE	18/04/20
REV	213	DATE	18/04/20
REV	214	DATE	18/04/20
REV	215	DATE	18/04/20
REV	216	DATE	18/04/20
REV	217	DATE	18/04/20
REV	218	DATE	18/04/20
REV	219	DATE	18/04/20
REV	220	DATE	18/04/20
REV	221	DATE	18/04/20
REV	222	DATE	18/04/20
REV	223	DATE	18/04/20
REV	224	DATE	18/04/20
REV	225	DATE	18/04/20
REV	226	DATE	18/04/20
REV	227	DATE	18/04/20
REV	228	DATE	18/04/20
REV	229	DATE	18/04/20
REV	230	DATE	18/04/20
REV	231	DATE	18/04/20
REV	232	DATE	18/04/20
REV	233	DATE	18/04/20
REV	234	DATE	18/04/20
REV	235	DATE	18/04/20
REV	236	DATE	18/04/20
REV	237	DATE	18/04/20
REV	238	DATE	18/04/20
REV	239	DATE	18/04/20
REV	240	DATE	18/04/20
REV	241	DATE	18/04/20
REV	242	DATE	18/04/20
REV	243	DATE	18/04/20
REV	244	DATE	18/04/20
REV	245	DATE	18/04/20
REV	246	DATE	18/04/20
REV	247	DATE	18/04/20
REV	248	DATE	18/04/20
REV	249	DATE	18/04/20
REV	250	DATE	18/04/20
REV	251	DATE	18/04/20
REV	252	DATE	18/04/20
REV	253	DATE	18/04/20
REV	254	DATE	18/04/20
REV	255	DATE	18/04/20
REV	256	DATE	18/04/20
REV	257	DATE	18/04/20
REV	258	DATE	18/04/20
REV	259	DATE	18/04/20
REV	260	DATE	18/04/20
REV	261	DATE	18/04/20
REV	262	DATE	18/04/20
REV	263	DATE	18/04/20
REV	264	DATE	18/04/20
REV	265	DATE	18/04/20
REV	266	DATE	18/04/20
REV	267	DATE	18/04/20
REV	268	DATE	18/04/20
REV	269	DATE	18/04/20
REV	270	DATE	18/04/20
REV	271	DATE	18/04/20
REV	272	DATE	18/04/20
REV	273	DATE	18/04/20
REV	274	DATE	18/04/20
REV	275	DATE	18/04/20
REV	276	DATE	18/04/20
REV	277	DATE	18/04/20
REV	278	DATE	18/04/20
REV	279	DATE	18/04/20
REV	280	DATE	18/04/20
REV	281	DATE	18/04/20
REV	282	DATE	18/04/20
REV	283	DATE	18/04/20
REV	284	DATE	18/04/20
REV	285	DATE	18/04/20
REV	286	DATE	18/04/20
REV	287	DATE	18/04/20
REV	288	DATE	18/04/20
REV	289	DATE	18/04/20
REV	290	DATE	18/04/20
REV	291	DATE	18/04/20
REV	292	DATE	18/04/20
REV	293	DATE	18/04/20
REV	294	DATE	18/04/20
REV	295	DATE	18/04/20
REV	296	DATE	18/04/20
REV	297	DATE	18/04/20
REV	298	DATE	18/04/20
REV	299	DATE	18/04/20
REV	300	DATE	18/04/20
REV	301	DATE	18/04/20
REV	302	DATE	18/04/20

Approval conveyed herein neither relieves the Vendor/Contractor of his contractual obligations and his responsibilities for correctness of dimensions, materials of construction, weights, quantities, designs, details, assembly fits, performance requirements and conformity to supplies with the Indian Statutory Laws as may be applicable, nor does it limit the purchaser's rights under the contract.

Reviewed by Date.....



R1

<p>BIDDEN HEAVY ELECTRICALS is not to be used directly or indirectly in any way detrimental to the interests of the client.</p>									
<p>ARCHITECTURAL DRAWING GIS BUILDING (PLAN)</p>									
<p>TITLE</p>									
<p>DRAWING NO. 1B-1-400-807-640-1</p>									
<p>SCALE 1:175</p>									
<p>DATE 18-01-2022</p>									
<p>REV. 01</p>									

BHARAT HEAVY ELECTRICALS LTD
TRANSMISSION BUSINESS GROUP
NOIDA

 $\triangleleft R1$ 

12mm

EXTERNAL:
12mm THK. PLASTER (1:6 CEMENT : SAND)
18mm THK. PLAIN PLASTER (1:6 CEMENT : SAND)
12mm 1ST LAYER 1:6 C.S., 6MM 2ND LAYER 1:4
CEILING EXCEPT FOR WHERE FALSE CEILING WILL BE
6mm THK. PLAIN PLASTER (1:4 CEMENT : SAND)

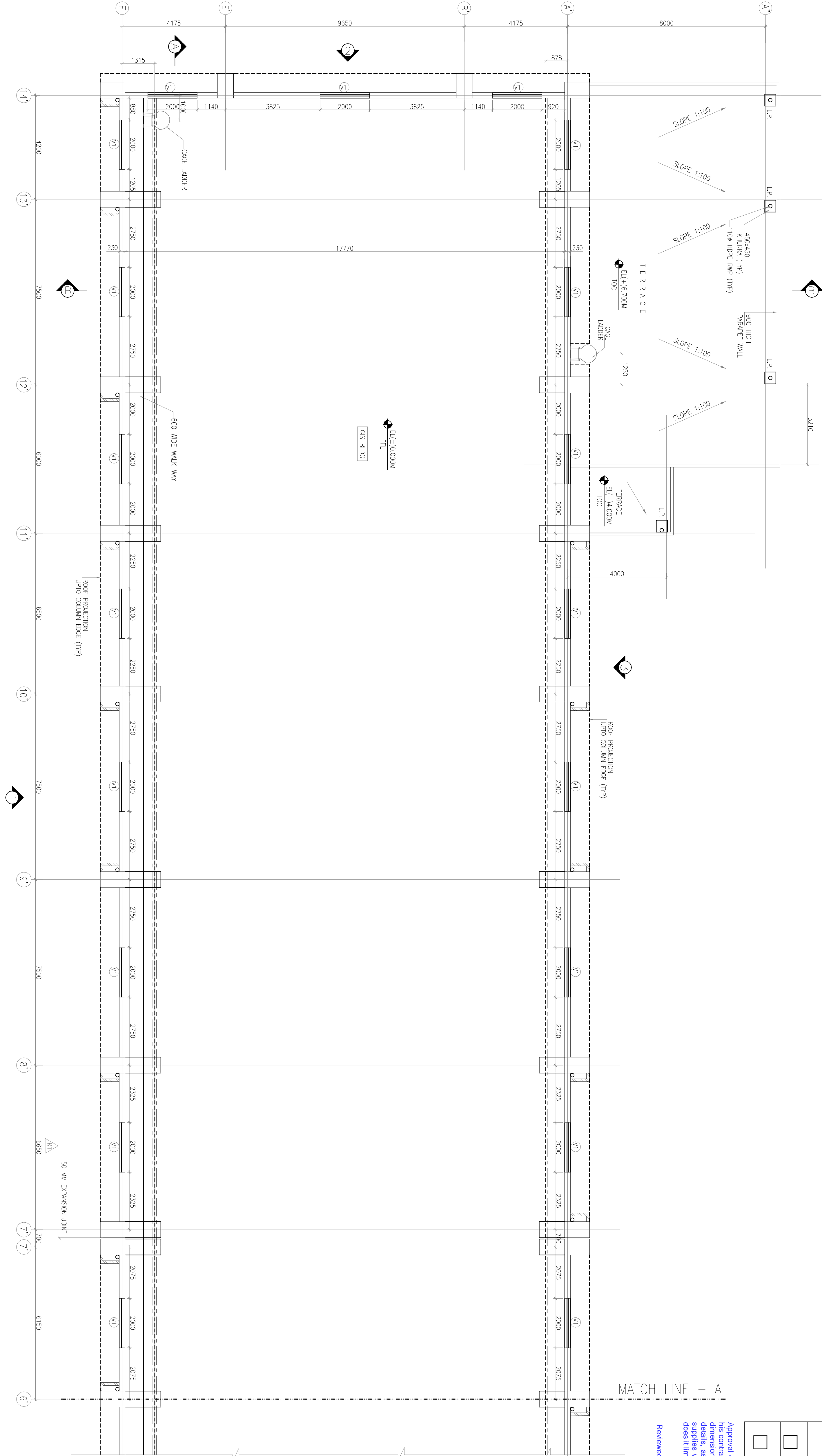
ON DRAWING

TATA CONSULTING ENGINEERS LIMITED
VENDOR DRAWING STATUS

CATEGORY	DESCRIPTION
<input type="checkbox"/> CAT-1	Drawing/documents approved for material procurement, BH&EL will proceed with manufacturing/ fabrication/construction.
<input checked="" type="checkbox"/> CAT-2	Drawing/documents cleared for manufacturing/ fabrication/construction subject to incorporating the comments given. BH&EL to resubmit the drawing for Approval in Category - 1. Comments will be marked on the drawing documents.
<input type="checkbox"/> CAT-3	Drawing document will be corrected as per comments and resubmitted by BH&EL for further review/checking.
<input type="checkbox"/> CAT-4	Drawing document of this category are for information only and not for approval. Information furnished on the document is noted.

Approval conveyed herein neither relieves the Vendor/Contractor of his contractual obligations and his responsibilities for correctness of dimensions, materials of construction, weights, quantities, design details, assembly and erection requirements and conformity of sizes with the Indian Standards and specifications applicable, nor does it limit the purchaser's rights under the contract.

Reviewed by : Date:



PLAN AT GRAIN GIRDER LEVEL@ EL(+9.500M

NOTES:-

1. ALL DIMENSIONS ARE IN MILLIMETERS AND LEVELS ARE IN METERS UNLESS OTHERWISE SPECIFIED.
2. ALL WINDOWS AND VENTILATORS ON GROUND FLOOR OF ALL BUILDINGS SHALL BE PROVIDED WITH SUITABLE MS GRILL.
3. ALL DOOR-WINDOW, ETC. HEIGHT SHALL BE CONSIDERED FROM FINISH FLOOR LEVEL.

PROJECT	2X660 MW UDANGUDI SUPERCritical TPS, STAGE-1
CUSTOMER	TAMILNADU GENERATION AND DISTRIBUTION CORPORATION LIMITED (TANGEDCO)
CONSULTANT	TATA CONSULTING ENGINEERS LIMITED BENGALURU
	BHARAT HEAVY ELECTRICALS LTD TRANSMISSION BUSINESS GROUP NOIDA
JOB NO.	CONTRACT
STATUS	DISTRIBUTION
COPY RIGHT AND COPYRIGHT	
The information on this document is the property of BH&EL. BH&EL ELECTRICALS LIMITED is not to be used directly or indirectly in any way detrimental to the interest of the company.	
TITLE	ARCHITECTURAL DRAWING GIS BUILDING (PLAN)
DATE	20.03.20
REV.	01

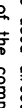


	CATEGORY	DESCRIPTION
<input type="checkbox"/>	CAT-1	Drawing documents approved for final distribution. BHEI will proceed with manufacturing.
<input checked="" type="checkbox"/>	CAT-2	Drawing documents cleared for fabrication/construction subject to incorporating the comments given. BHEI to resubmit the drawing for Approval in Category – 1. Comments will be marked on the drawing documents.
<input type="checkbox"/>	CAT-3	Drawing document will be corrected by the comment and resubmitted by the category.
<input type="checkbox"/>	CAT-4	Drawing document of this category are for information only and not for approval. Information furnished on the document is noted.

Approval reviewed herein neither relieves the Vendor/Contractor of his contractual obligations and his responsibilities for correctness of dimensions, materials of construction, weights, quantities, designs or details, assembly fit, performance requirements and conformity of supplies with the Indian Statutory Laws as may be applicable, nor does it limit the purchaser's rights under the contract.

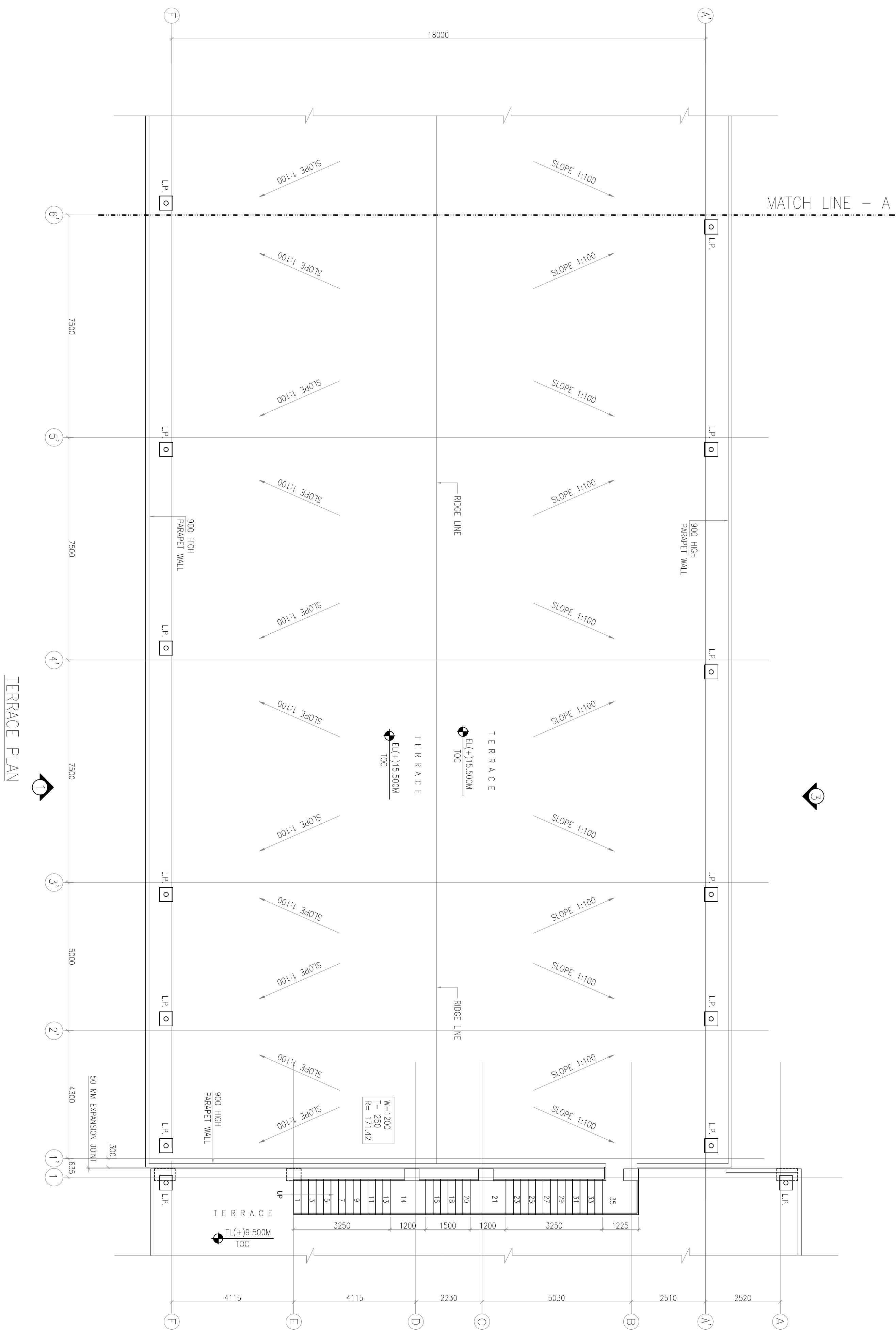
Reviewed by Date.....

PROJECT	2X660 MW UDANGUDI SUPERCRITICAL TPS, STAGE-1
CUSTOMER	TAMILNADU GENERATION AND DISTRIBUTION CORPORATION LIMITED (TANGEDCO)
CONSULTANT	TATA CONSULTING ENGINEERS LIMITED BENGALURU
UNIT NO.	BHARAT HEAVY ELECTRICALS LTD
STATUS	TRANSMISSION BUSINESS GROUP
PROJECT LOCATION	NOLDA

<p>THE ARCHITECTURAL DRAWING GIS BUILDING (PLAN)</p>	
<p>DATE: 10/10/2023</p> <p>BY: J. Smith</p> <p>REV: 01</p>	<p>DRAWING NO. TB-1-400-607-640-1</p> <p>SHEET NO. 06</p>
<p>SCALE: 1:75</p> <p>SECTION</p> <p></p>	<p>DATE: 10/10/2023</p> <p>BY: J. Smith</p> <p>REV: 01</p>

NOTES:-

- 1 ALL DIMENSIONS ARE IN MILLIMETERS AND LEVELS ARE IN METERS UNLESS OTHERWISE SPECIFIED.
- 2 ALL WINDOWS AND VENTILATORS ON GROUND FLOOR OF ALL BUILDINGS SHALL BE PROVIDED WITH SUITABLE MS GRILL.
- 3 ALL DOOR-WINDOW, ETC. HEIGHT SHALL BE CONSIDERED FROM FINISH FLOOR LEVEL.



TERRACE PLAN

TATA CONSULTING ENGINEERS LIMITED
VENDOR DRAWING STATUS

CATEGORY	DESCRIPTION
<input type="checkbox"/> CAT-1	Drawing/documents approved for trial distribution. BHEL will proceed with manufacturing/fabrication/construction.
<input checked="" type="checkbox"/> CAT-2	Drawing/documents cleared for manufacturing/fabrication/construction subject to incorporating the comments given. BHEL to resubmit the drawing for Approval in Category - 1. Comments will be marked on the drawing
<input type="checkbox"/> CAT-3	Drawing document will be corrected as per comment and resubmitted by BHEL for further review/checking.
<input type="checkbox"/> CAT-4	Drawing document of this category are for information only and not for approval. Information furnished on the document is noted.

Approval conveyed herein neither relieves the Vendor/Contractor of his contractual obligations and his responsibilities for correctness of design and construction details nor does it constitute an approval or endorsement by BHEL. The Vendor/Contractor shall be responsible for the correctness of design and construction details. BHEL will not be responsible for any errors or omissions in the drawing. BHEL will not be responsible for any errors or omissions in the drawing. BHEL will not be responsible for any errors or omissions in the drawing.

Reviewed by : Date :

PROJECT	2X660 MW UDANGUDI SUPERCRITICAL TPS, STAGE-I
CUSTOMER	TAMILNADU GENERATION AND DISTRIBUTION CORPORATION LIMITED (TANGEDCO)
CONSULTANT	TATA CONSULTING ENGINEERS LIMITED BENGALURU
STATUS	CONTRACT
JOB NO.	
DISTRIBUTION	

REV.	DATE	AUT.	QCD	APP.	REV.	DATE	AUT.	QCD	APP.	REV.	DATE	AUT.	QCD	APP.
01	19.04.20	NR			01	19.04.20	NR							

REVIEWED AS PER COMMENTS

DATE	19.04.20	SCALE	1:75	DRAWING NO.	TB-1-400-607-640-1	REV.	01
DATE	19.04.20	SCALE	1:75	DRAWING NO.	TB-1-400-607-640-1	REV.	01

NOTES:-

1. ALL DIMENSIONS ARE IN MILLIMETERS AND LEVELS ARE IN METERS UNLESS OTHERWISE SPECIFIED.
2. ALL WINDOWS AND VENTILATORS ON GROUND FLOOR OF ALL BUILDINGS SHALL BE PROVIDED WITH SUITABLE MS GRILL.
3. ALL DOOR-WINDOW, ETC. HEIGHT SHALL BE CONSIDERED FROM FINISH FLOOR LEVEL.

400 KV SWITCHYARD AT UDANGUDI SUPERCRITICAL TPS STAGE-I (2X660 MW)			
Clarification for & Architectural dwgs. GIS Building (Plans,Elevations & sections)			
BHEL Ref. No.: CLAR/PNK/20.04.19			
BHEL DWG/DOC NO.:		TB-1-400-607-640-1,2 & 3	
DWG/DOC NAME:		Architectural dwgs. GIS Building (Plans,Elevations & sections)	
SL. NO.	Comments From TCE		BHEL Clarifications.
A			
1	THIS DWG (CONCEPTUAL GIS BUILDING LAYOUT - TB-1-400-316-005) NOT FOUND IN BHEL PEDM,SUBMIT THIS DWG FOR APPROVAL INCLDE BHEL'S VENDOR DWG ALSO IN REF LIST		The drawing is available in PEDM .Vendor drawing: 1HYG900056-2_REV 03: GIS LAYOUT
2	FURNISH LOCATING CO-ORDINATES FOR THIS BUILDING		marked in drawing.
3	CHECK THOROUGHLY REGARDING WALL/ROOF OPNGS FOR ANY DUCTS,CABLE TRAYS ETC.AND FURNISH THESE OPNG DETAILS,CONFIRM FINALISATION OF THESE OPNGS.		Wall opening related to GIS bus duct exit is already included in line with 1HYG900056-2_REV 03: GIS LAYOUT.
4	FURNISH FINISH SCHEDULE		Shall be provided seperately .
5	CHECK THOROUGHLY AND ENSURE MATCHES WITH PROJ.SPECIFICATION AND CONFIRM		Confirmed.
6	CHECK AND CONFIRM LOCATION OF THIS STAIRCASE AND PLATFORM IS AS PER GA AND SYSTEM REQUIREMENTS NOT FOUND IN ABB DWG,CHECK		Refer BHEL document CONCEPTUAL GIS BUILDING LAYOUT - TB-1-400-316-005-REV 3. Vendor drawing is only limited to GIS layout inside building.
7	CHECK AND ENSURE REGARDING ANY EQUIPMENTS ARE LOCATED ON TERRACE,IF SO FURNISH THEIR LOCATION,SUPPORTING ARRGT. AND APPROACH PATHWAYS ETC.		Solar module will be coming on GIS building roof. Separate drawing will be submitted by BHEL rudrapur for the location & supproting arrangement. TBG-civil to ensure to consider loading of the solar modules in design of terrace.